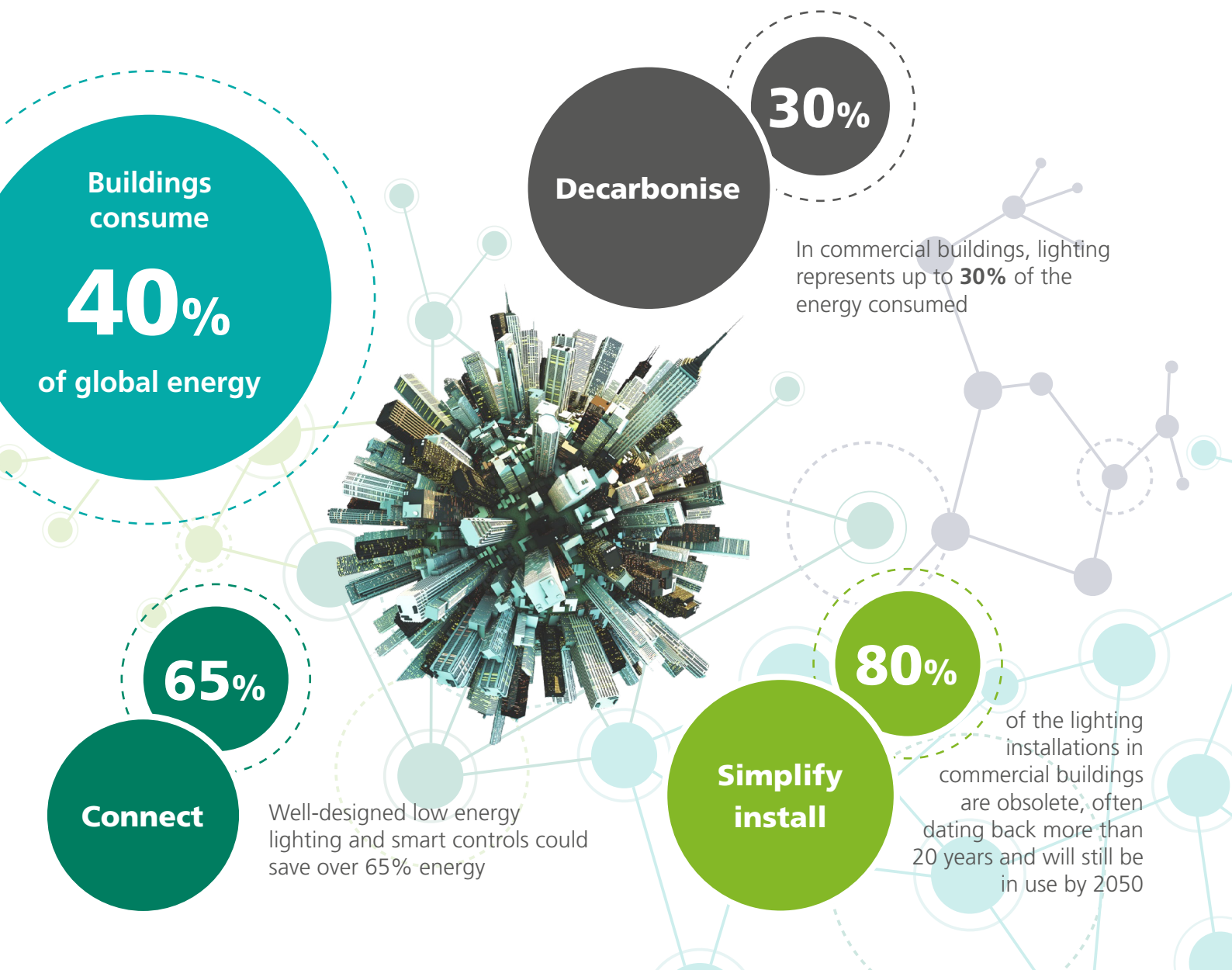




Digital Solutions



Addressing the Efficiency Demands of Your Building



Buildings consume

40%

of global energy

Decarbonise

30%

In commercial buildings, lighting represents up to **30%** of the energy consumed

65%

Connect

Well-designed low energy lighting and smart controls could save over 65% energy

80%

Simplify install

of the lighting installations in commercial buildings are obsolete, often dating back more than 20 years and will still be in use by 2050



SylSmart Connected

Unlock the intelligent building

SylSmart Connected presents a wireless and intelligent lighting control system that establishes a sustainable solution and ecosystem for all types of buildings, delivering exceptional energy efficiency while maintaining occupant comfort at its core.

It all starts with a multi-functional integrated sensor built on Bluetooth technology



Powerful multifunctional sensor



Bluetooth® Network Lighting Control



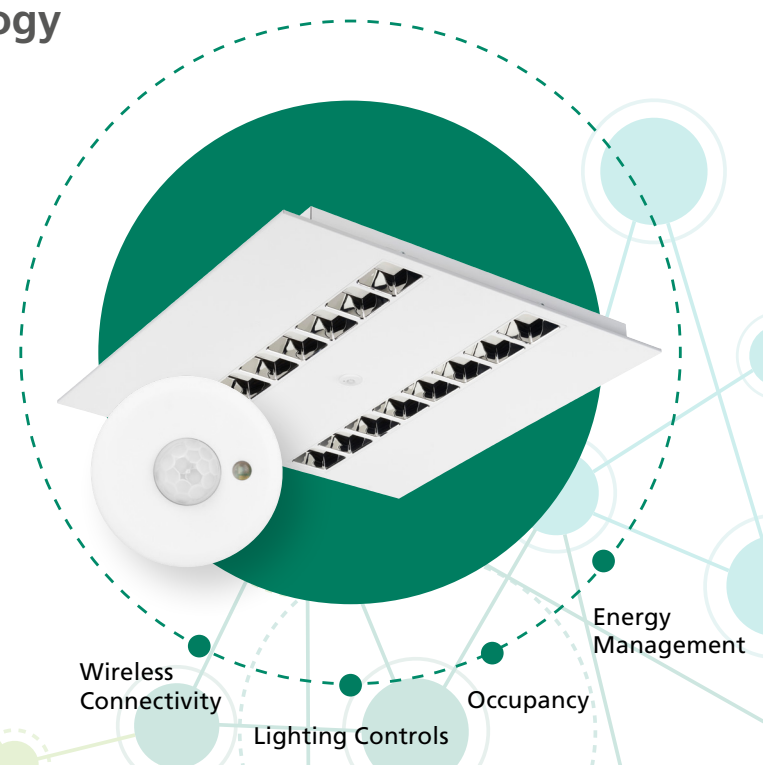
No single point of failure



No extra wiring



Intuitive commissioning and management tools

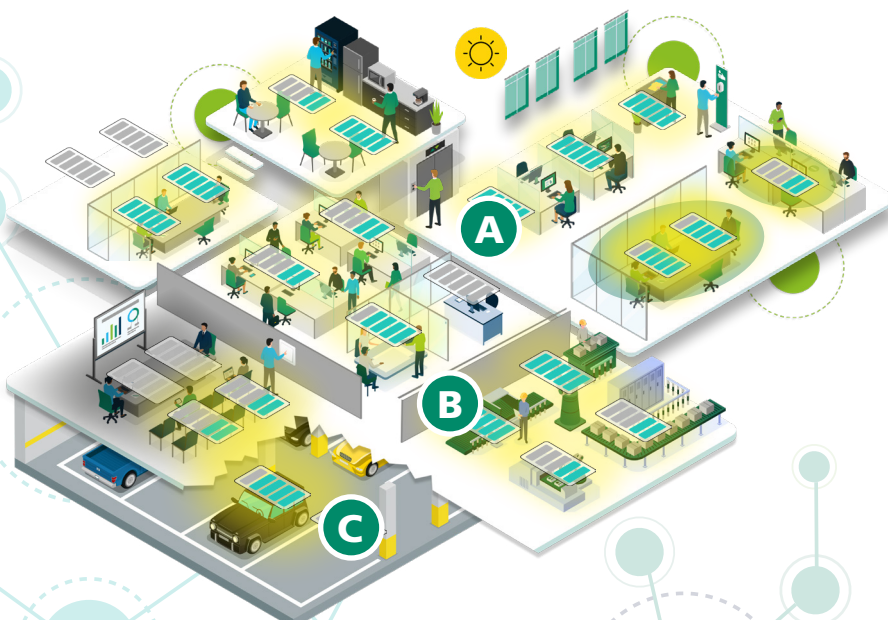


Flexible and efficient Smart lighting solutions to suit your space



Tailored Lighting Control for Personalised Spaces

Our advanced lighting control technology ensures optimal illumination while empowering occupants to customise the ambiance according to their preferences. Experience utmost comfort in perfectly tailored spaces.



A Office space

B Industry space

C Parking space



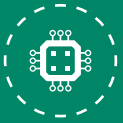
bsi
BIM Design &
Construction
Capital/Delivery
ISO 19650-1 and -2
VERIFIED

VC 737955 2021



SylSmart Connected

Unlock the intelligent building



Intelligence & Smart Controls

- decentralised operating system based on mesh network, offering exceptional motion coverage
- full set of smart controls feature: occupancy & daylight sensing, grouping & scenes, manual tunable white



Rapid Installation & Scalable

- preconfigure off-site, optimise on-site time
- no extra wiring and simple to scale with preloaded setting



Easy Maintenance

- floor plan view, preventative maintenance
- adoptability to changing layouts

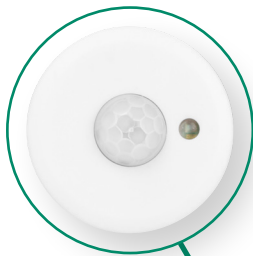


Cyber Secure, Interoperable & Robust

- no single point of failure and cybersecurity
- open standard Bluetooth® Network Lighting Control

Configuration 1

Luminaire with intelligent sensor integrated



Configuration 4

Detached sensor kit (DSK)



Configuration 5

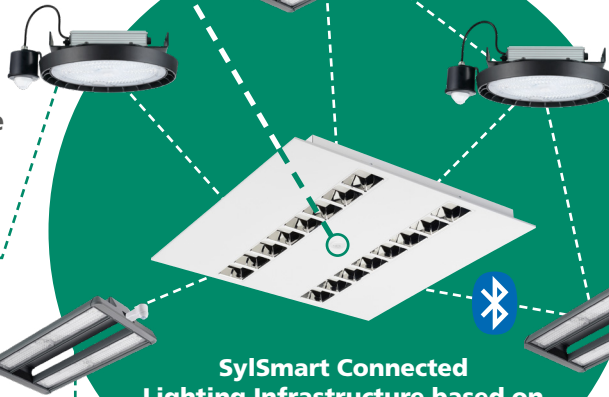
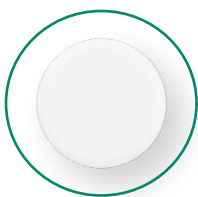
QBM Converter



- DSK with DALI or Integrated Driver
- QBM Converter with DALI Power

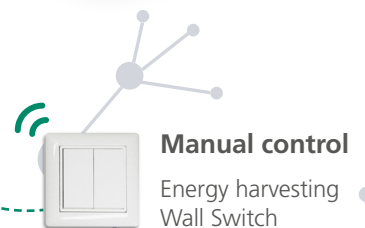
Configuration 2

Combine Integrated sensor fixtures + integrated controller node



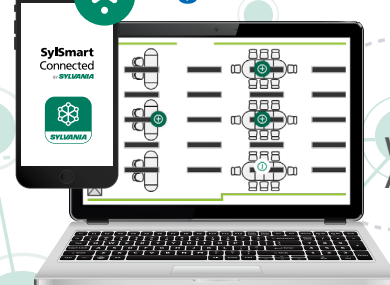
Configuration 3

Use integrated sensor to integrated multiple DALI devices



Manual control
Energy harvesting
Wall Switch

Bluetooth® NLC



Web and
App control

Technology partner: **SILVAIR**

Configuration options



Zhaga: Standardised smart modules used in lighting fixtures.



D4i: An extension of the DALI-2 certification program drivers have a mandatory set of features related to power-supply requirements and smart-data capabilities.

Integrated Sensor:
Luminaire integrated sensor with wireless communications and full sensing capabilities.

Controller Node:
Wireless Bluetooth communication node able to communicate from one device to another.

Configuration 1: Intelligent sensor integrated

Occupancy & daylight sensing
Granular control & data
No additional wires
Built with open standard

- D4i compatible
- Zhaga compatible

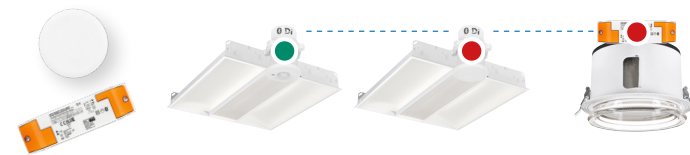


Advantages

- Lower CAPEX
- Easiest installation
- Excellent sensor coverage
- Maximised energy savings

Configuration 2: Integrated sensor + Controller node

- One device controls one or more devices
- No additional wiring

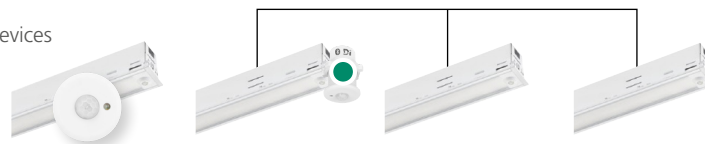


Advantages

- Easy to scale at building level
- Easiest installation
- Good energy savings
- Automated Lighting control
- Highest data insights

Configuration 3: Integrated sensors + DALI devices

Integrated Sensor with DALI
One device controls one or more devices through a wired connection



Advantages

- Ideal for Linear lighting systems
- Connected DALI fixtures
- Quick DALI Upgrade
- Automated Lighting control

Configuration 4: Supporting accessory

Detached Sensor Kit
Control lighting devices which cannot incorporate a sensor



Advantages

- Lower cost
- Connect DALI and Bluetooth fixtures
- Presence & Daylight harvesting capability
- Centralised Room Control

Configuration 5: Supporting accessory

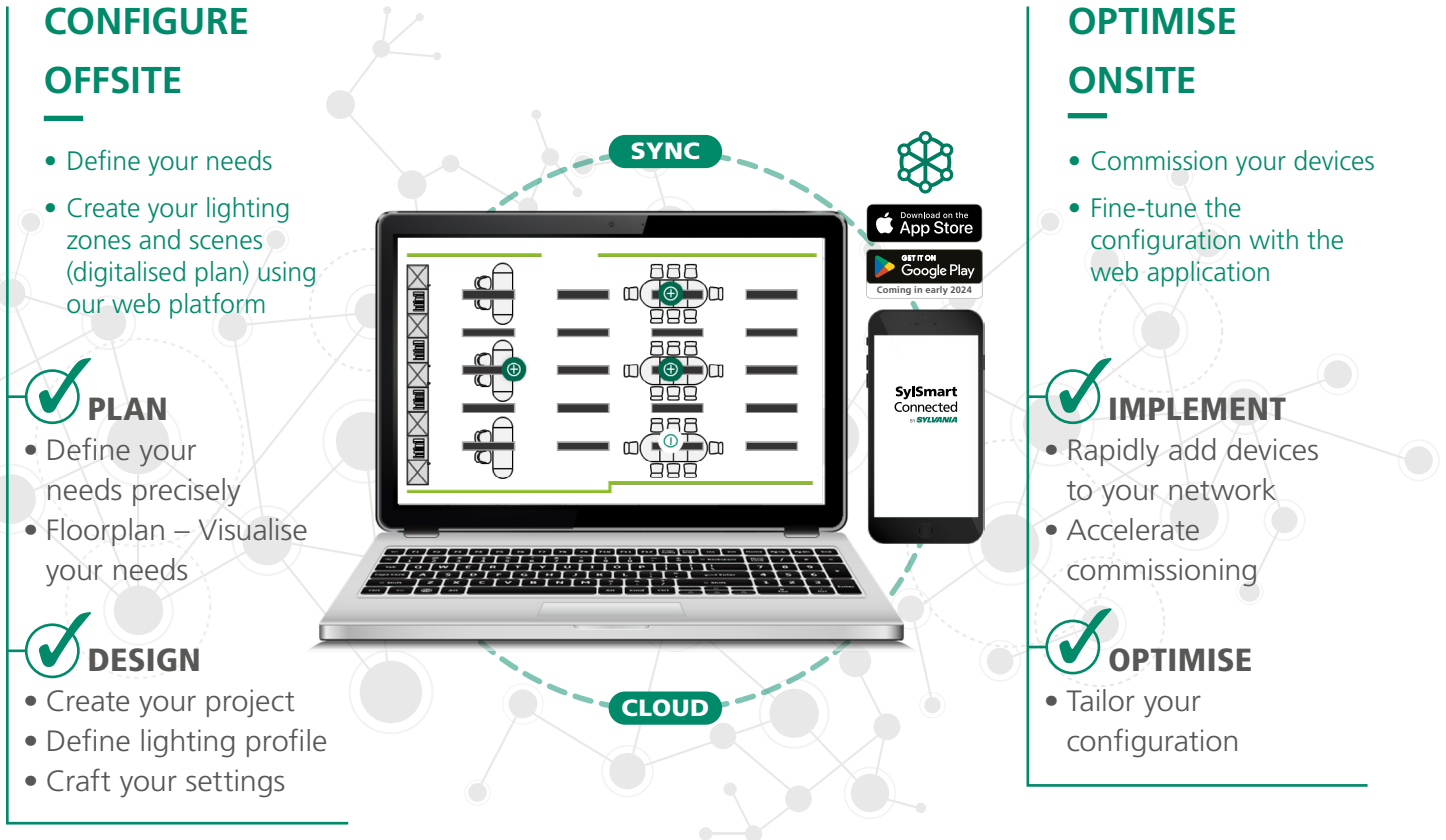
QBM Converter with DALI Power & Emergency Light Testing



Advantages

- Lowest cost
- Connected DALI fixtures
- Schedule based Emergency Light Testing

Easier commissioning than ever before for your lighting project



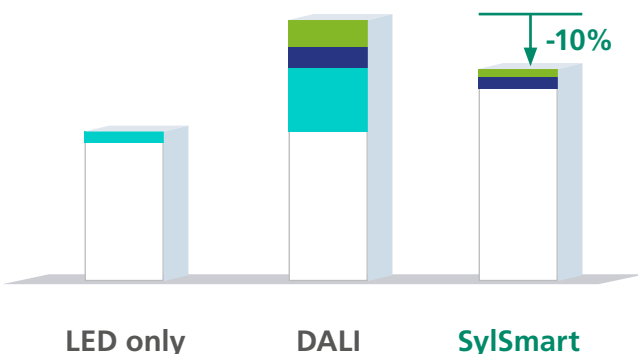
- ✓** Save time on site
- ✓** Control costs
- ✓** Minimal disruption to end user

A smart investment

SylSmart Connected system is a smart investment.

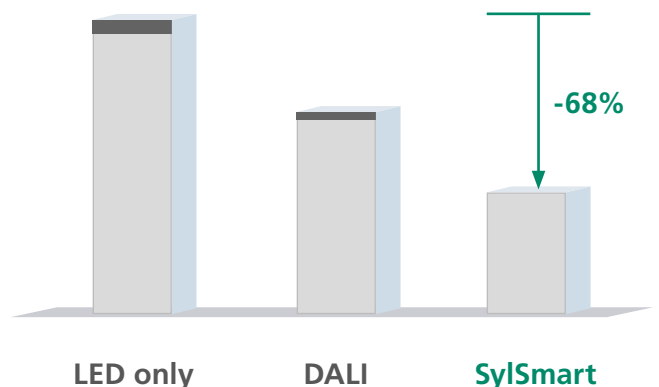
System cost

■ Luminaires
 ■ Controls
 ■ Installation
 ■ Commissioning



Running cost

■ Electricity
 ■ Carbon costs





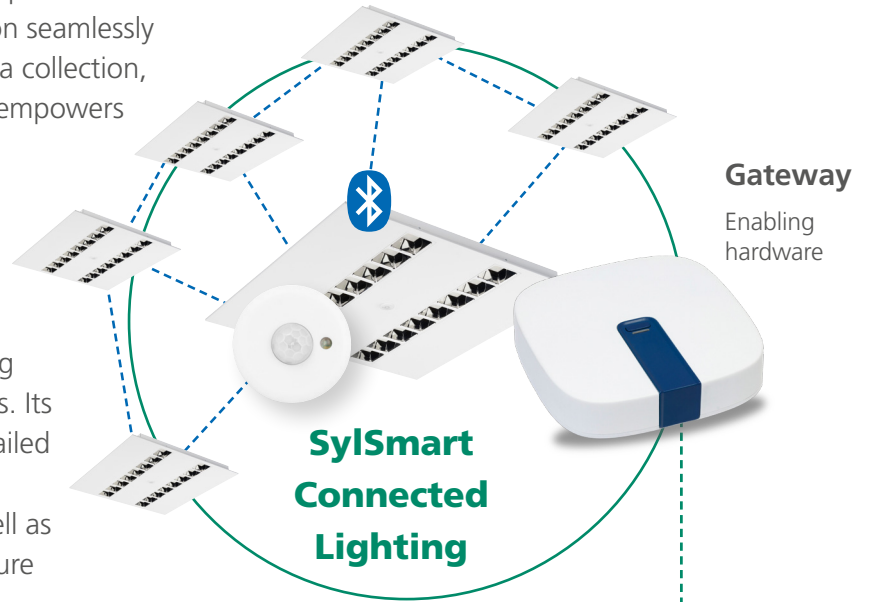
SylSmart Connected Pro

Paving the way to data driven efficiencies

SylSmart Connected Pro, the complementary solution of SylSmart Connected A world of new digital propositions

SylSmart Connected Pro, an innovative digital platform extension to SylSmart Connected. This solution seamlessly integrates global monitoring and detailed data collection, providing user-friendly, actionable insights. It empowers users to optimise building assets, enhance connectivity to various systems, and boost efficiency, ultimately elevating the quality of building services for occupants.

SylSmart Connected Pro is a secure, scalable, open-standard digital platform, revolutionizing lighting's role in data-driven modern buildings. Its features encompass global multi-site and detailed asset oversight, floorplan-based navigation, remote lighting control and scheduling, as well as lighting analytics and occupancy insights. Future enhancements are on the horizon.

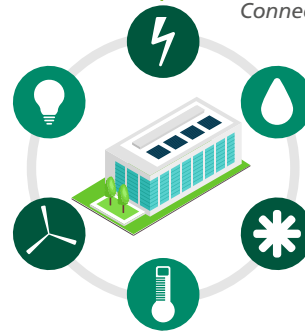
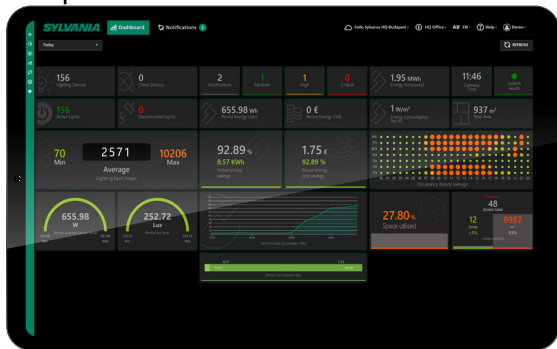


SylSmart Connected Pro Value added Services



Connected Pro+ API

3rd party API integration by Connected Pro



Environment



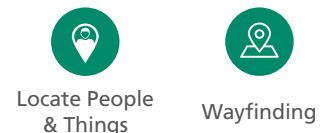
Safety & Security



Other Systems



Real-time Location Services



Key

- Bluetooth NLC
- Bluetooth Connectivity
- Internet Connection
- Cloud Connection
- API Connection



SylSmart Connected Pro

Paving the way to data driven efficiencies



Manage assets from anywhere

- global oversight of your premise, e.g. dashboard view, floorplan view, assets status
- control remotely with convenience and apply advanced rules & notifications including light scheduling



Develop new business insights

- collect historical data with high granularity, use analytics tools to optimise your lighting system
- explore contextual data to drive building occupancy, space management or environmental performance



World of Connectivity Options

- cloud-based connectivity (open API) to BMS and 3rd party IoT services



Cyber Secure

- secure by design - developed to industry best practices (OWASP2021; Azure defender)



Pro Capabilities

- Occupancy analytics
- Energy Analytics & Management
- Status monitoring
- Remote control & scheduling
- Notifications & Multi-site control



SylSmart Connected Pro

Paving the way to data driven efficiencies

SylSmart Connected Pro. Packages crafted to meet your needs

Swift and Effective Onboarding: Our dedicated team of Field Application Engineers ensure expert setup, granting you immediate access to essential lighting features, guaranteeing a smooth and efficient transition.

<h3>Pro</h3> <h4>Foundation Lighting Service</h4> <p>Start here: a launchpad to your Digital world</p> <ul style="list-style-type: none"> • System Management • Asset Overview (Basic) • Device Status (Basic) (On / Off) • Floorplan Navigation • Schedules • Scenes Basic (Zone level dim) • Remote Control 	<h3>Pro+</h3> <h4>Advanced Lighting Service</h4> <p>Evolve: New beyond lighting opportunities</p> <ul style="list-style-type: none"> • Dashboard • Asset Overview (advanced) • Notifications • Lighting Performance Analytics • Occupancy Analytics • Fault codes (coming soon) • Global Scenes (Multi-site) 	<h3>Pro+ Add-ons</h3> <h4>Value Added Service Packs</h4> <p>Peak performance: Embracing the full power of IoT</p> <ul style="list-style-type: none"> • Lighting Service API • High resolution Lighting service data • Central Emergency (coming soon) • Environment Analytics (coming soon)
---	--	--

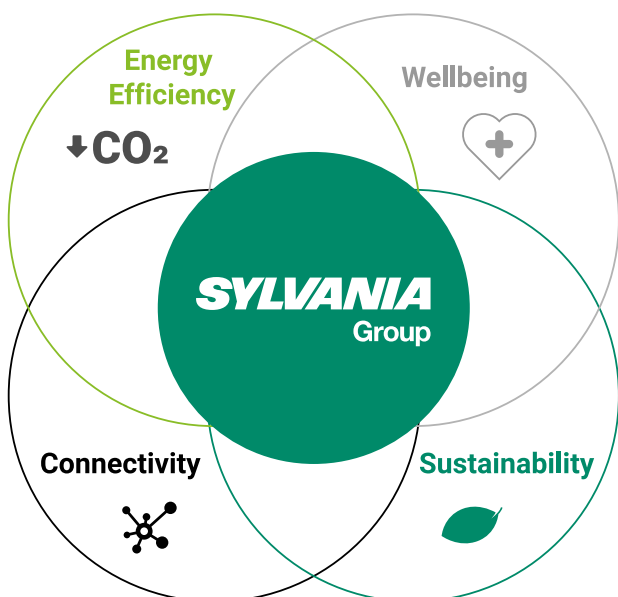




An ecosystem that is both comprehensive and effective, designed to assist you with your projects

Sylvania Group offers a comprehensive approach that goes beyond just the product itself.

By working with Sylvania Group, you will gain a thorough understanding of your energy consumption, allowing you to effectively manage it and develop sustainable savings plans that are tailored to your specific needs and usage.



Our Commitments

As a specialist in professional and architectural lighting, Sylvania Group puts all its know-how, its capacity for innovation, the technology of its products and its services to contribute to:

- Increase energy efficiency, improve ecological footprint
- Promote digitalisation
- Increase the well-being of users

Our Strengths

- Know-how of more than 100 years
- European production sites
- Proactivity and flexibility
- European logistics centre
- Passionate, local technical assistance

360 Services

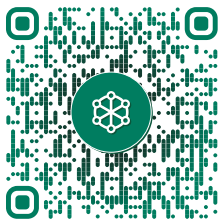




sylvania-lighting.com/connected



sylsmart@sylvania-lighting.com



Although every effort has been made to ensure accuracy in the compilation of the technical detail within this publication, specifications and performance data are constantly changing. Current details should therefore be checked with Feilo Sylvania International Group Kft.

Copyright:
Feilo Sylvania International Group Kft.
Duna Tower, Népfürdő Street 22,
Building B, 3rd Floor
1138 Budapest, Hungary

October 2023



sylvania-lighting.com

The Bluetooth® word mark and logos are registered trademarks owned by Bluetooth SIG, Inc. and any use of such marks by Flowil International Lighting (Holding) B.V. is under license. Other trademarks and trade names are those of their respective owners.