

Departures

Page 2 of 2

Tue 26 Feb 10:12

Flight	Destination	Time	Status	Gate
EZY8881	Geneva	10:00	Relax and Shop	
EZY8877	Rome	10:00		
BD236	Brussels	10:00		
FR127	Dublin	10:00		
WWE183	Edinburgh	10:00		
FR538	Dublin	10:00		
FR1676	Londonderry	10:00		
FR9388	Girona	10:00		
FR1732	Granada	10:00		
WWE826	Glasgow	10:00		
FR1742	Knock	10:10		
WWE477	Amsterdam	10:10		
WWE603	Belfast Int	10:10		

EXIT

FIRE EXIT

Push bar to open

Staff exit

EMERGENCY

Concord

643 Route LED



647 Route LED II



SYLVANIA

648 SYL Safe







Control Gear: Electronic
Integral Sensor: Not applicable
Emergency: 3 hours
Reflector: None
Housing: Acrylic

Route LED Downlights

RouteLED - Standard

Concord



- Miniature ceiling recessed non maintained 3hr emergency 3W
- Accent LED downlight with green charge indicator
- Stand alone unit complete with inverter module and Nickel-Cadmium battery pack
- Inverter and battery pack pass through the luminaire cut out
- Quick and easy installation with simple plug and socket connections
- Custom RAL colours available on request

LIGHT SOURCE INCLUDED



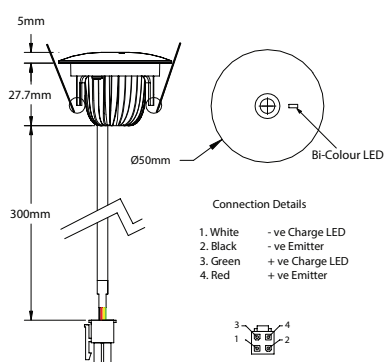
RouteLED - Standard

Code	Description	Colour
9192132	RouteLED 3W Emg	White
9154072	DALI RouteLED	White
9150539	Selftest RouteLED	White
9150374	Surface RouteLED 3W Emg	White
9154085	Surface DALI RouteLED 3W Emg	White
9150511	Surface Selftest RouteLED	White

Input Voltage	4V DC Max
Power Rating	700mA
Light Source	Edison EDEW Series
Beam Angle	110°
Cut Out	Ø 43mm
Light Source Colour	Cool White
Colour Temperature	6000K
Luminaire Output	194 Lumens
General CRI	70
Tc Max	80°C LED Backplate
Wiring Method	Series connection via C201 Series Plug
Dimensions	Ø 50mm x 50mm

Spacing Table

Mounting Height	To Wall		Between Fittings	
	0.5	1.0	0.5	1.0
2.5	4.1	3.3	9.5	8.1
3.0	4.5	3.5	10.6	8.8
4.0	4.9	3.5	12.1	9.6
5.0	5.0	3.1	13.1	9.8
6.0	4.9	2.3	13.8	9.6
8.0	3.7	-	13.8	6.3



Surface Mounted Versions
Diameter 185mm x 40mm deep



- Miniature ceiling recessed non maintained 3hr emergency 3W
- Accent LED downlight with green charge indicator
- Stand alone unit complete with inverter module and Nickel-Cadmium battery pack
- Inverter and battery pack pass through the luminaire cut out
- Quick and easy installation with simple plug and socket connections
- Custom RAL colours available on request

LIGHT SOURCE INCLUDED



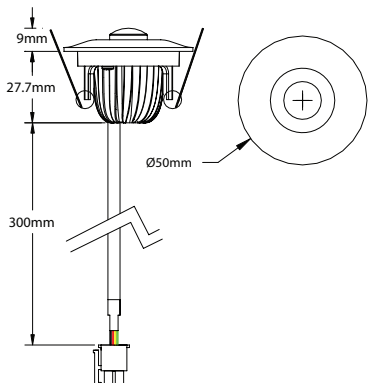
RouteLED - Open Area

Code	Description	Colour
9192134	RouteLED 3W Emg Open Area	White
9154043	RouteLED 3W Emg DALI Addressable	White
9154068	Selftest RouteLED Open Area	White
9154080	Surface RouteLED 3W Emg Open Area	White
9154181	Surface DALI RouteLED 3W Emg Open Area	White
9154070	Surface Selftest RouteLED Open Area	White

Input Voltage	4V DC Max
Power Rating	700mA
Light Source	Edison EDEW Series
Beam Angle	110°
Cut Out	Ø 43mm
Light Source Colour	Cool White
Colour Temperature	6000K
Luminaire Output	207 lumens
General CRI	70
Tc Max	80°C LED Backplate
Wiring Method	Series connection via C201 Series Plug
Dimensions	Ø 50mm x 50mm

Spacing Table

Mounting Height	To Wall		Between Fittings	
	0.5	1.0	0.5	1.0
2.5	3.8	3.5	8.1	7.5
3.0	4.4	3.9	9.3	8.6
4.0	5.3	4.5	11.6	10.5
5.0	6.1	3.6	13.7	11.8
6.0	6.2	-	15.5	8.3



Surface Mounted Versions
Diameter 185mm x 40mm deep



- Miniature ceiling recessed non maintained 3hr emergency 3W
- Accent LED downlight with green charge indicator
- Stand alone unit complete with inverter module and Nickel-Cadmium battery pack
- Inverter and battery pack pass through the luminaire cut out
- Quick and easy installation with simple plug and socket connections
- Custom RAL colours available on request

LIGHT SOURCE INCLUDED



RouteLED - Corridor

Code	Description	Colour
9192136	RouteLED 3W Emg Corridor	White
9154044	RouteLED 3W Emg Corridor Lens DALI Addressable	White
9154069	Selftest RouteLED Corridor	White
9153981	Surface RouteLED 3W Emg Corridor	White
9154182	Surface DALI RouteLED 3W Emg Corridor	White
9153982	Surface Selftest RouteLED Corridor	White

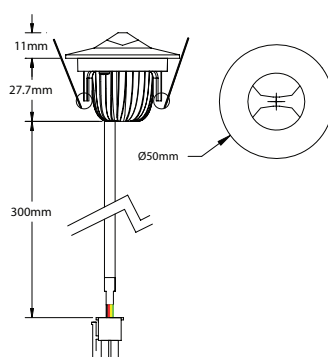
Input Voltage	4V DC Max
Power Rating	700mA
Light Source	Edison EDEW Series
Beam Angle	125 deg x 50 deg
Cut Out	Ø 43mm
Light Source Colour	Cool White
Colour Temperature	6,000K
Luminaire Output	197 lumens
General CRI	71
Tc Max	80°C LED Backplate
Wiring Method	Series connection via C201 Series Plug
Dimensions	Ø 50mm x 50mm

Spacing Table
Along Corridor (Length)

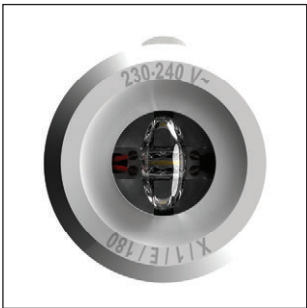
Mounting Height	To Wall		Between Fittings	
	0.5	1.0	0.5	1.0
2.5	5.0	4.4	11.5	9.9
3.0	5.6	4.9	12.7	11.1
4.0	6.7	5.4	15.2	13.3
5.0	7.5	4.1	17.5	14.1
6.0	7.1	2.9	19.4	14.0
8.0	4.7	-	20.0	9.2

Spacing Table
Along Corridor (Width)

Mounting Height	To Wall		Between Fittings	
	0.5	1.0	0.5	1.0
2.5	2.2	1.8	6.5	4.3
3.0	2.3	1.9	6.6	4.5
4.0	2.7	1.9	6.2	5.2
5.0	2.8	1.9	6.9	5.4
6.0	2.7	1.4	7.5	5.2
8.0	2.3	-	7.5	3.6



Surface Mounted Versions
Diameter 185mm x 40mm deep



RouteLed with corridor lens



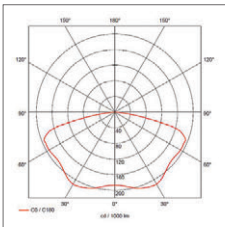
- Miniature ceiling recessed non maintained 3hr emergency 2W
- Accent LED downlight with green charge indicator
- Stand alone unit complete with inverter module and Nickel-Metal Hydride battery pack
- Inverter and battery pack pass through a 40mm cutout
- Quick and easy installation with simple plug and socket connections
- Outstanding performance - 9m open area and 19m corridor spacing (see table below)

LIGHT SOURCE INCLUDED

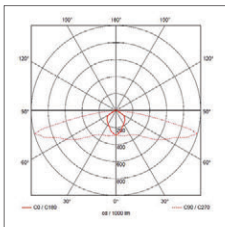


RouteLED II

Code	Description	Type	Lense	Colour
2059459	RouteLED II Open Area	Standard	Open area	White
2059460	RouteLED II Corridor	Standard	Corridor	White
2059461	RouteLED II Open Area DALI	DALI	Open area	White
2059463	Route LED Corridor DALI	DALI	Corridor	White
2059462	RouteLED II SM Accessory	Surface mount accessory	-	White



Open area - 200lm



Corridor lens - 200lm

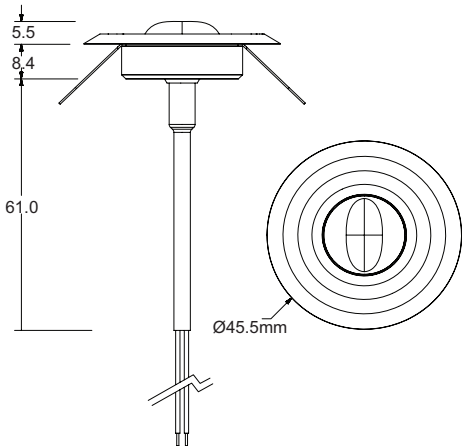
RouteLED II Accessory

Code	Description	Type	Lense	Colour
2059462	RouteLED II SM Accessory	Surface mount accessory	-	White

Spacing Table

Room Size 15 x 15m		Open Area Lens	
Mounting height	Wall to fitting	Fitting to fitting	Total Lux
2.7m	3m	9m	1.2lx
3m	3m	9m	1.3lx
4m	3m	9m	1.3lx
5m	3m	9m	1.2lx
6m	3m	9m	1.1lx

Room Size 15 x 15m		Corridor Lens	
Mounting height	Wall to fitting	Fitting to fitting	Total Lux
2.7m	7.5m	19.9m	1lx
3m	7.5m	19.9m	1.1lx
4m	7.5m	19.9m	1lx
5m	7.5m	19.9m	1lx
6m	5.4m	12m	1.2lx



Dimensions (mm)

This guide should be read in conjunction with current standards.

Legislation Changes & Requirements

The British Standard BS5266 has been revised to conform with the European Standard EN1838 (issued in the UK under reference BS EN1838/BS5266 Part 7) which specifies

luminous requirements for Emergency systems installed in premises. It also now calls up the luminaire product standard BS EN60598-2-22: 1999.

Emergency lighting is provided for use when the supply to the normal lighting fails and is therefore powered from a source independent of that supplying the normal lighting. For the purposes of this standard Emergency lighting is regarded as a generic term of which there are a number of forms.

Definitions

Emergency EXIT

A way out that is intended to be used in an Emergency.

ESCAPE ROUTE

A route designated for escape in the event of an Emergency.

Emergency ESCAPE LIGHTING

That part of Emergency lighting that provides illumination for the safety of people leaving a location or attempting to terminate a potentially dangerous process before doing so.

ESCAPE ROUTE LIGHTING

That part of Emergency escape lighting provided to ensure that the means of escape can be effectively identified and safely used when the location is occupied.

Emergency OPEN AREA LIGHTING

In some countries this is known as anti-panic lighting. This relates to that part of Emergency escape lighting provided to avoid panic and provide illumination, allowing people to reach a place where an escape route can be identified.

HIGH RISK TASK AREA LIGHTING

That part of Emergency escape lighting that provides illumination for the safety of people involved in a potentially dangerous process or situation and to enable proper shut down procedures for the safety of the operator and other occupants of the premises.

Areas Covered/Levels of Illumination

DEFINED ESCAPE ROUTE

Based on 2m wide on the horizontal plane, preferably 1 lux but not less than 1 lux on the centre line. The lighting provided should operate within 5 seconds of the failure of the normal supply.

OPEN AREA (Sometimes referred to as 'anti-panic' lighting)

Not less than 0.5 lux at floor level of the open space. The ratio of max to min illuminance should be no greater than 40:1.

These extracts are provided for guidance purposes. In order to fully comply with the many elements of the various applicable standards, a full and thorough assessment must be made.





Standard exit sign



LED Exit Suspended



Recessed / Flush LED Exit

- Slimline white steel housing
- Wall or flush ceiling mounted
- White painted metal housings
- Silk screened legend panels
- Supplied arrow down as standard

LIGHT SOURCE NOT INCLUDED
(SELECTED MODELS)



Syl-Safe LED

Code	Description	Type
9154003	LED Exit Suspended	Arrow Down / Left / Right
9153908	Recessed / Flush LED Exit	Arrow Down
9150509	LED Exit Sign	Arrow Down

Syl-Safe

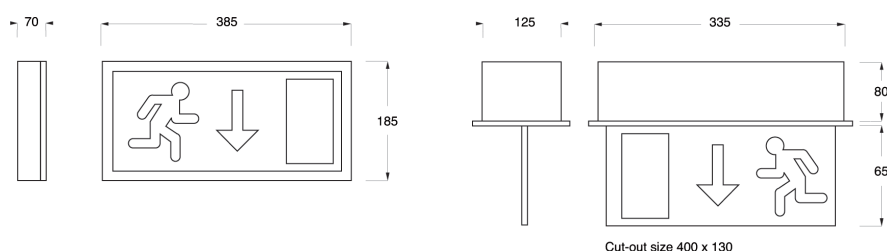
Code	Type	Type	Description
Wall mounted			
9136524	T5 8W	Wall Mounted Exit	Permanent
9137011	T5 8W	Wall Mounted Exit Self Test	Non-Maintained
9137012	T5 8W	Wall Mounted Exit Self Test	Permanent
Flush mounted			
9137006	T5 8W	Flush Mounted Exit	Non-Maintained
9137007	T5 8W	Flush Mounted Exit	Permanent
9137008	T5 8W	Flush Mounted Exit Self Test	Non-Maintained
9137010	T5 8W	Flush Mounted Exit Self Test	Maintained

Above luminaires are supplied with standard exit sign with arrow down legend. Left and right arrow versions available to order, see below.

Left and right legends

Code	Description	Exit Type
Wall mounted		
9137834	Legend only arrow left	Wall Mounted Exit Sign Legend
9137835	Legend only arrow right	Wall Mounted Exit Sign Legend
Flush mounted		
9137832	Legend only arrow left	Flush Mounted Exit Sign Legend
9137833	Legend only arrow right	Flush Mounted Exit Sign Legend

Operation	Non-Maintained	Maintained	Mains only
Light source	1 x 8 Watt T5		
Construction	Steel enclosure and gear tray with screen printed polycarbonate legend panel		
Light output (mains)	-	100lm	400lm
Light output (emerg)	400lm	100lm	-
Battery	2.4V 4AH NiCd		
Charge	250mA normal		
Recharge period	24hours (14hrs for 1hr duration)		
Input voltage	230Volt +/-10% ~ 50Hz		
Power	9VA (max.)	21VA (max.)	13VA



Dimensions (mm)



LED M3 Exit Box

- IP65 Polycarbonate body
- Clear Fresnel lens
- Ceiling or Wall mounted
- White flame retardant body and lens impact resistant
- Hinged gear tray for ease of installation and maintenance

LIGHT SOURCE NOT INCLUDED
(SELECTED MODELS)



Syl-Safe LED

Code	Description	Type
9144944	LED M3 Exit Box	Surface Mount

Syl-Safe IP65

Code	Description	Type
9136512	T5 8W	Non-maintained
9136514	T5 8W	Maintained

Syl-Safe IP65 Self Test

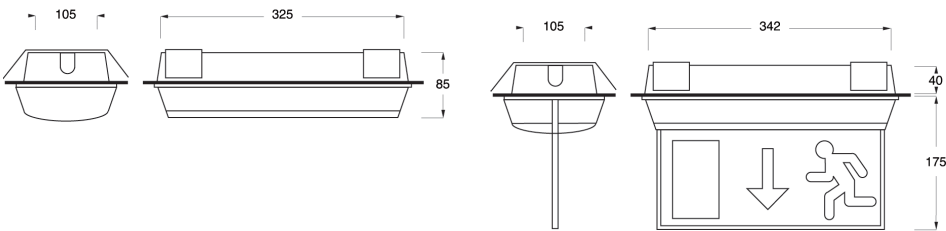
Code	Description	Type
9136513	T5 8W	Non-maintained
9136515	T5 8W	Maintained

Recessing Kit

Code	Description
9136516	Recessing Kit

Suspended Sign Kit

Code	Description	Type
Arrow down		
9137000	Arrow down	Single
9137003	Arrow down	Double
Arrow left		
9137001	Arrow left	Single
9137004	Arrow left	Double
Arrow right		
9137002	Arrow right	Single
9127005	Arrow right	Double



Dimensions (mm)

Cut-out size 343 x 116



Dublin airport - Dublin, Ireland